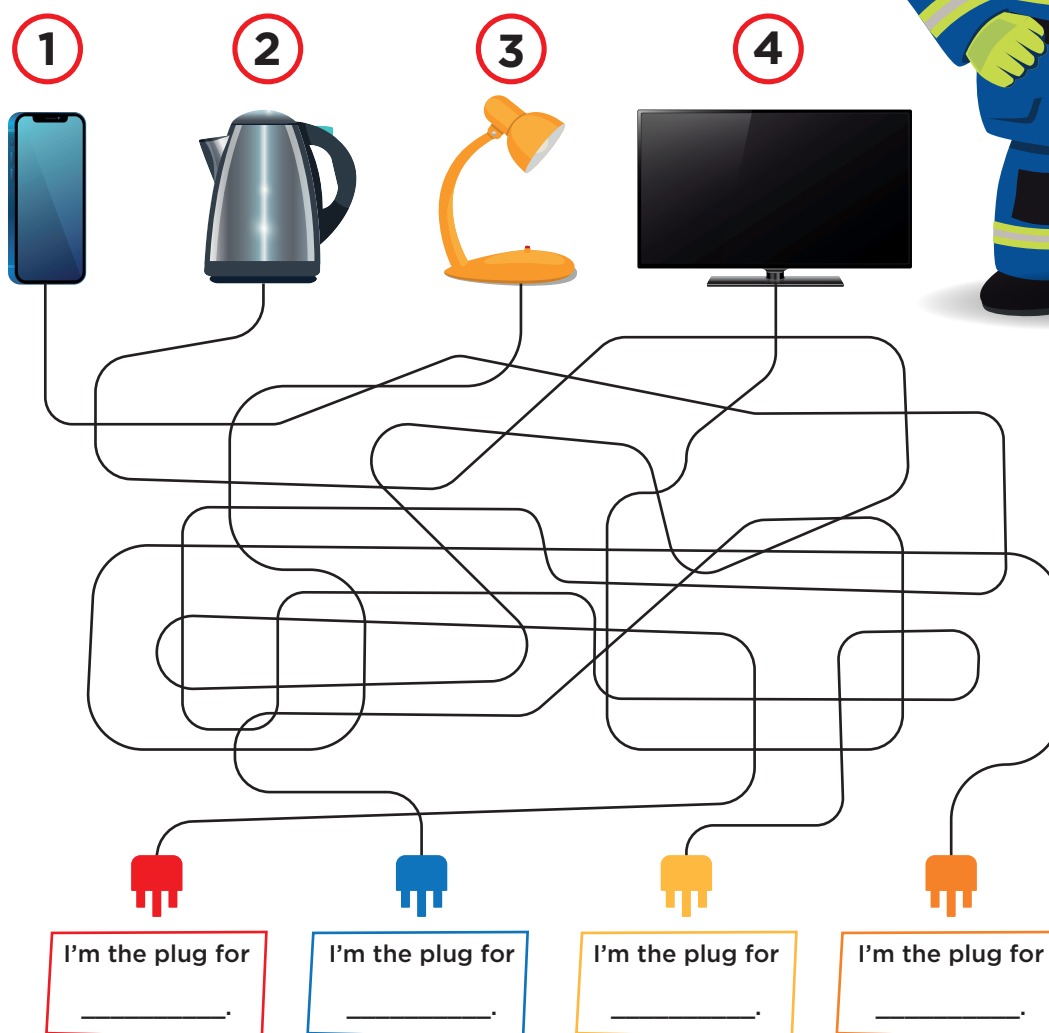


# Cable chaos!

Age 4-6

Can you work out which plug belongs to each electrical item?



## Cable safety

Don't allow your electrical items to get tangled like this, it can be very dangerous.

Follow our cable safety tips:

- Always check your cables for damage before using an electrical item
- Don't use items with a damaged cables, they can give you a shock or start a fire.
- Don't leave trailing cables, someone could trip over.

# Electrical safety tips

Age 7-8

Can you choose the right missing word for each blank space?

## Missing words:

Bed  
Damaged  
Metal

Overload  
Washing  
Water

Never use an electrical item with a \_\_\_\_\_ cable.

Don't \_\_\_\_\_ your sockets, you should only use one plug for one electrical item.

Unplug electrical items when you are going to \_\_\_\_\_ or not using them.

Never put anything made from \_\_\_\_\_ in the microwave, it can start a fire.

Don't leave your \_\_\_\_\_ machine on overnight or when you go out.

Don't use electrical items near \_\_\_\_\_.



# Answer sheet

No peeking!

## Cable chaos!

**Red plug** = Kettle

**Yellow plug** = phone

**Blue plug** = TV

**Orange plug** = Lamp

## Electrical safety tips

Never use an electrical item with a **DAMAGED** cable.

Don't **OVERLOAD** your sockets, you should only use one plug for one electrical item.

Unplug electrical items when you are going to **BED** or not using them.

Never put anything made from **METAL** in the microwave, it can start a fire.

Don't leave your **WASHING** machine on overnight or when you go out.

Don't use electrical items near **WATER**.

