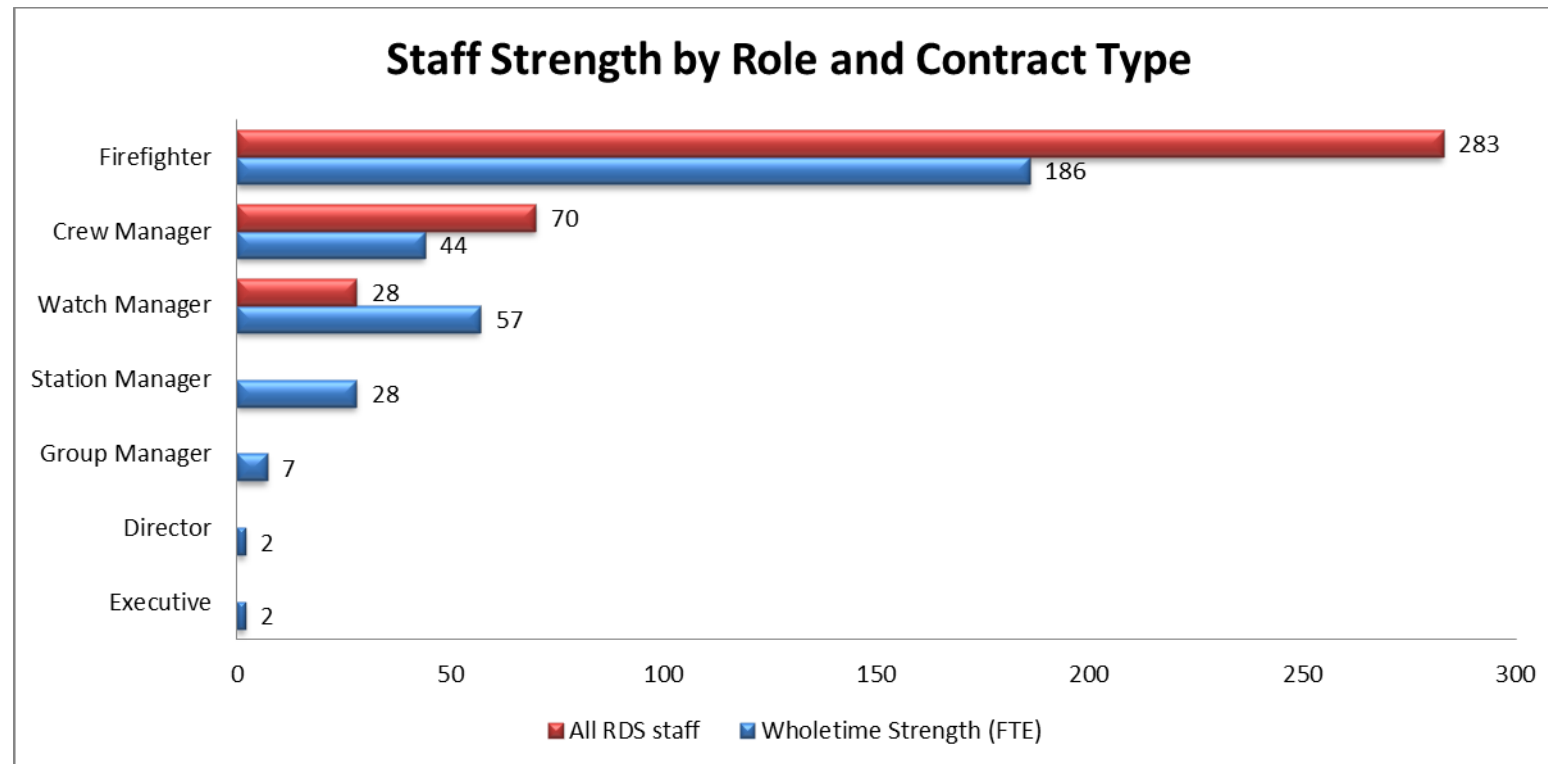


Staff strength by role and contract type

Strength by role and contract type at 31st March:

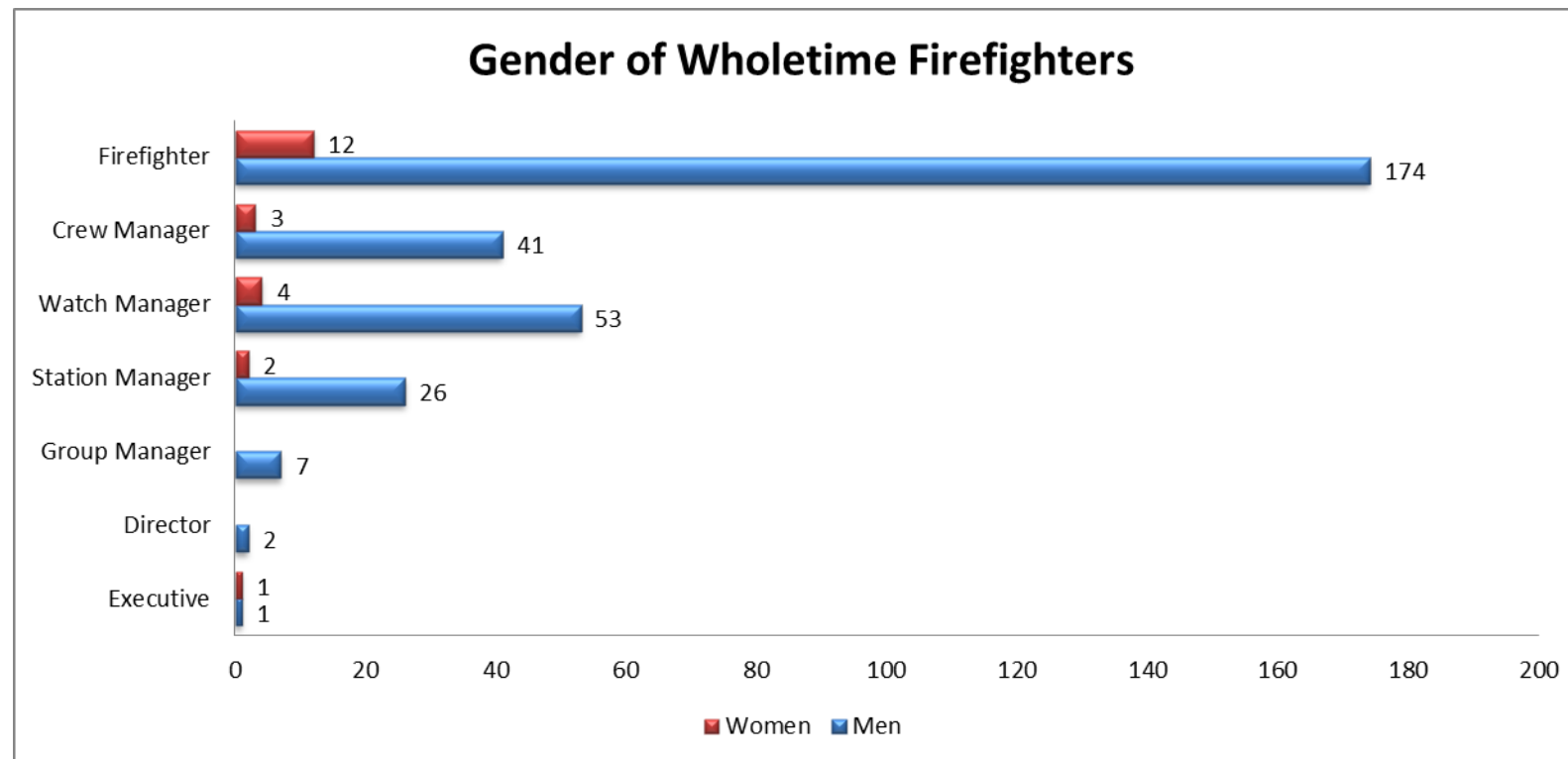
Position	Wholetime Strength (FTE)	All RDS staff	Of which also wholetime but on separate contract
Executive	2		
Director	2		
Group Manager	7		
Station Manager	28		
Watch Manager	57	28	1
Crew Manager	44	70	2
Firefighter	186	283	10
Total	326	381	13



Wholetime firefighters by gender, age, disability, ethnicity, religion and sexual orientation

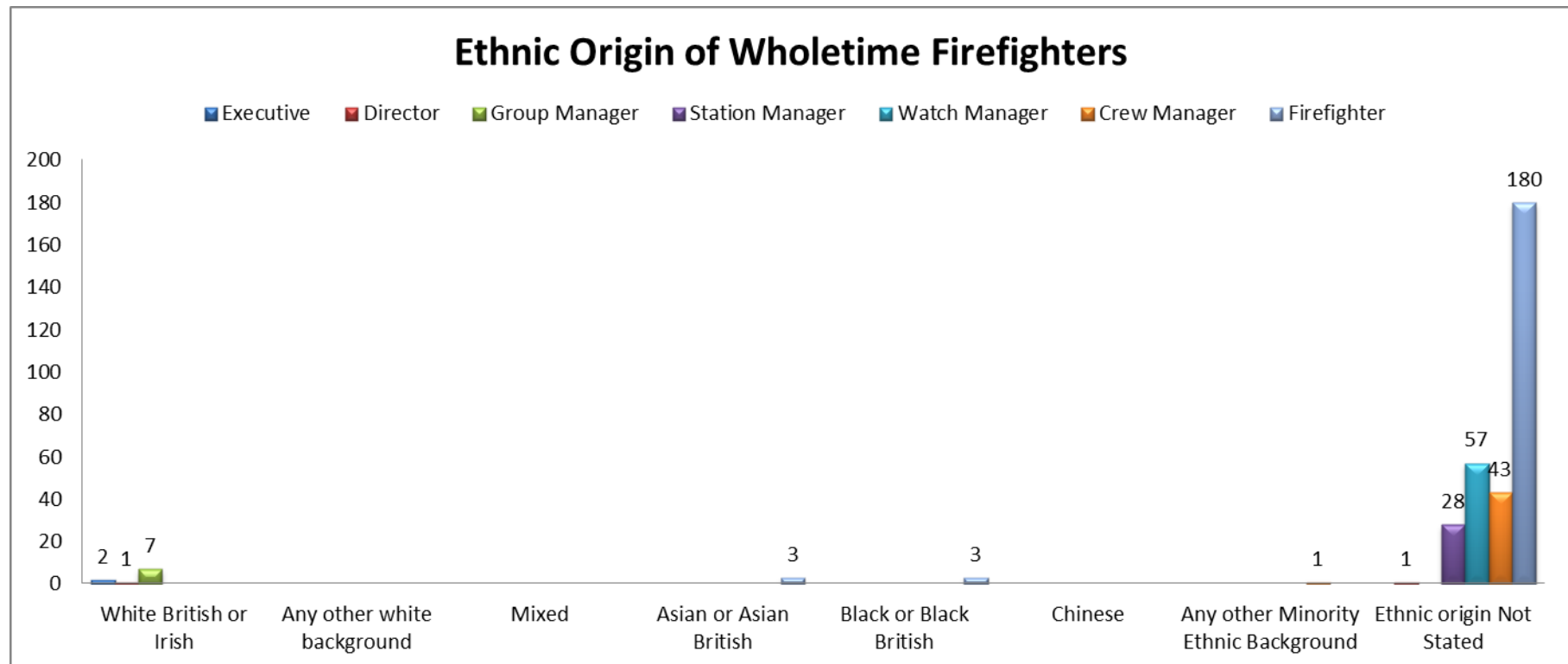
Gender of wholetime firefighters at 31 March:

Position	Men	Women
Executive	1	1
Director	2	
Group Manager	7	
Station Manager	26	2
Watch Manager	53	4
Crew Manager	41	3
Firefighter	174	12
Total	304	22



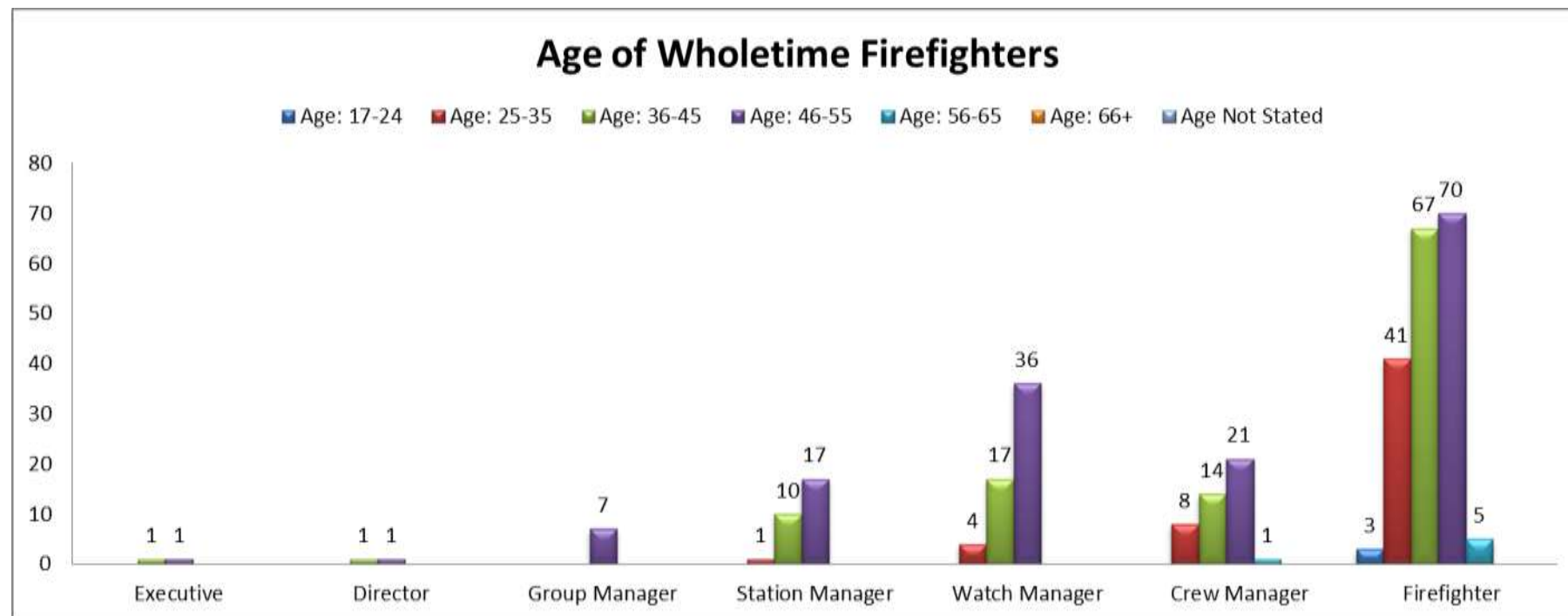
Ethnic Origin of Wholetime Firefighters at 31 March:

Position	White British or Irish	Any other white background	Mixed	Asian or Asian British	Black or Black British	Chinese	Any other Minority Ethnic Background	Ethnic origin Not Stated
Executive	2							
Director	1							1
Group Manager	7							
Station Manager								28
Watch Manager								57
Crew Manager							1	43
Firefighter				3	3			180
Total	10	0	0	3	3	0	1	309



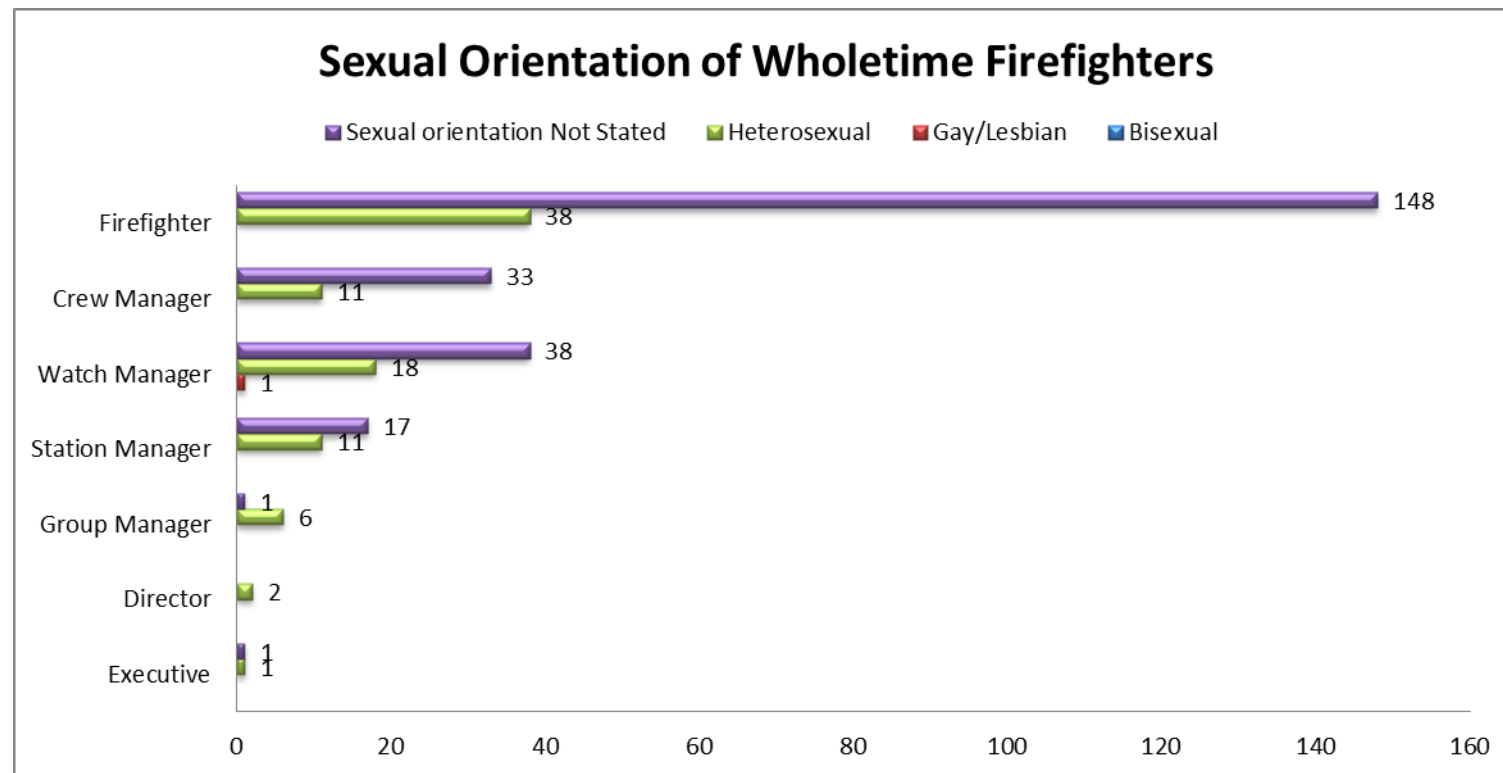
Age of Wholetime Firefighters at 31 March:

Position	Age: 17-24	Age: 25-35	Age: 36-45	Age: 46-55	Age: 56-65	Age: 66+	Age Not Stated
Executive			1	1			
Director			1	1			
Group Manager				7			
Station Manager		1	10	17			
Watch Manager		4	17	36			
Crew Manager		8	14	21	1		
Firefighter	3	41	67	70	5		
Total	3	54	110	153	6	0	0



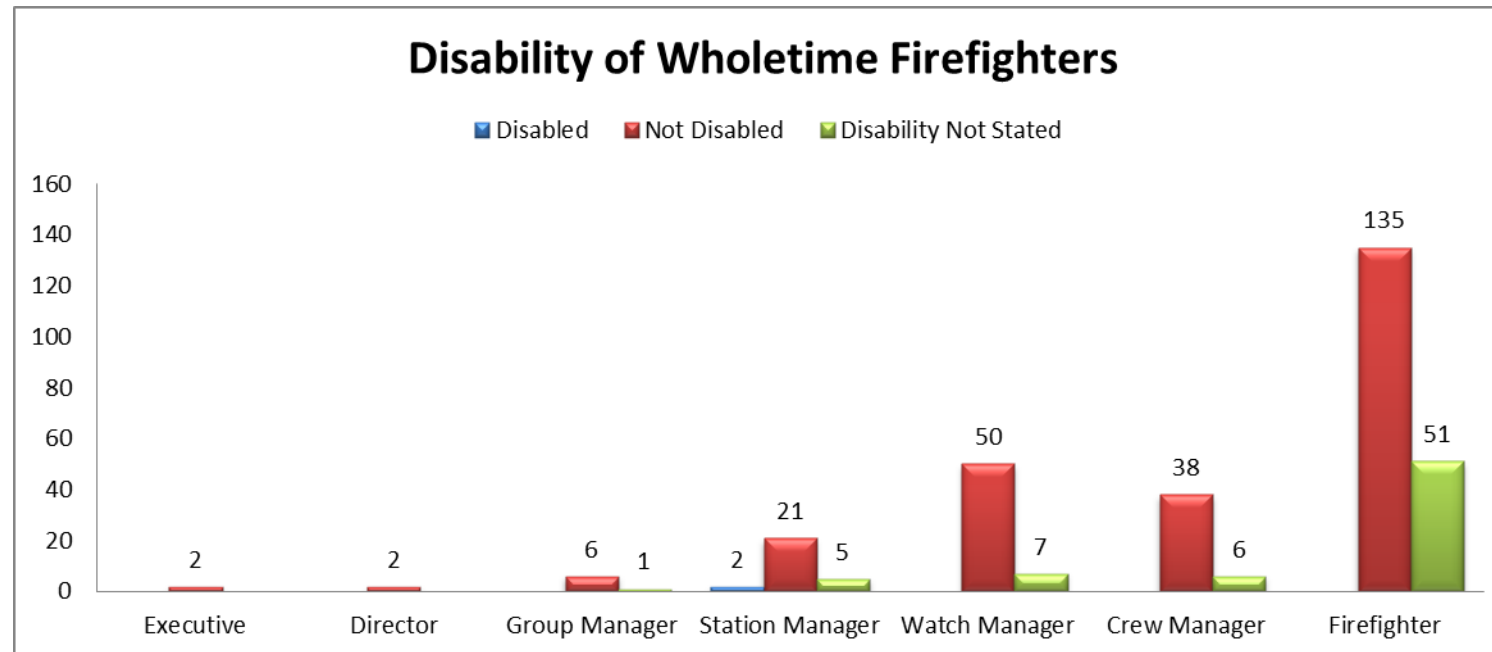
Sexual orientation of wholetime firefighters at 31 March:

Position	Bisexual	Gay/Lesbian	Heterosexual	Sexual orientation Not Stated
Executive			1	1
Director			2	
Group Manager			6	1
Station Manager			11	17
Watch Manager		1	18	38
Crew Manager			11	33
Firefighter			38	148
Total	0	1	87	238



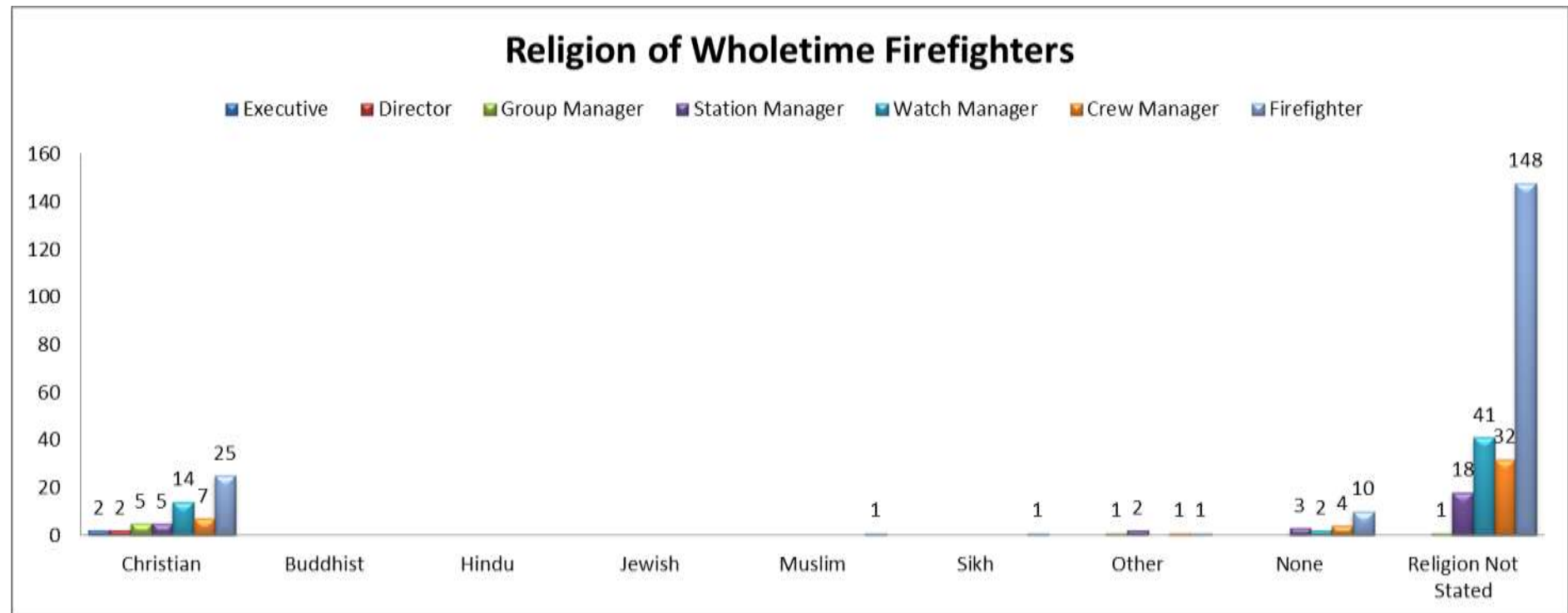
Disability of wholetime firefighters at 31 March:

Position	Disabled	Not Disabled	Disability Not Stated
Executive		2	
Director		2	
Group Manager		6	1
Station Manager	2	21	5
Watch Manager		50	7
Crew Manager		38	6
Firefighter		135	51
Total	2	254	70



Religion of wholetime firefighters at 31 March:

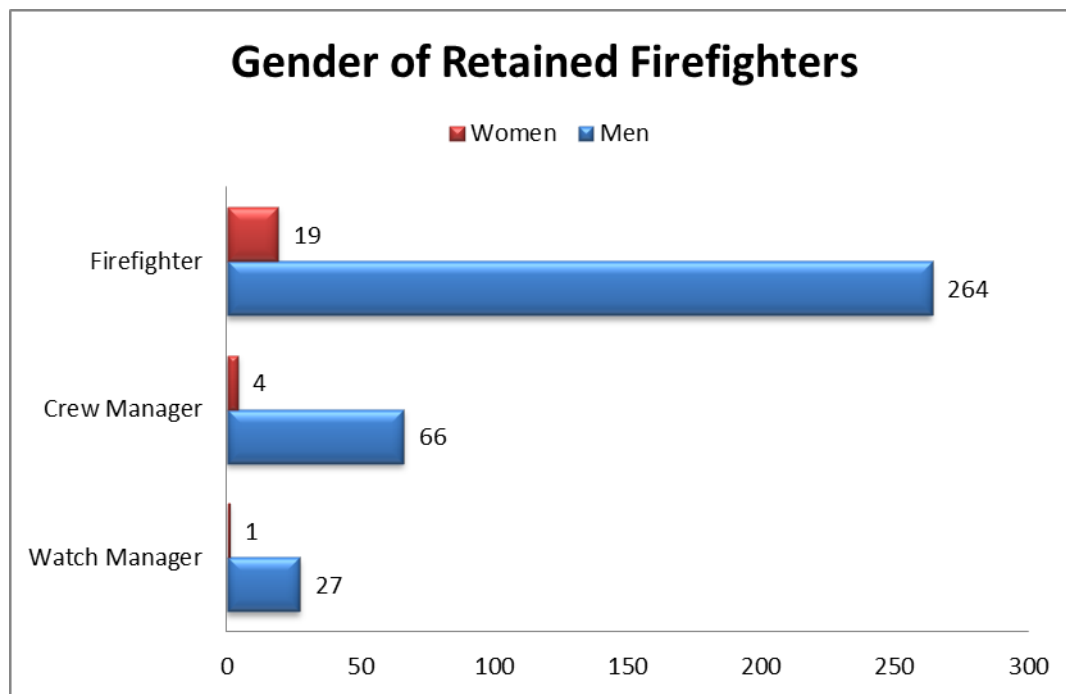
Position	Christian	Buddhist	Hindu	Jewish	Muslim	Sikh	Other	None	Religion Not Stated
Executive	2								
Director	2								
Group Manager	5						1		1
Station Manager	5						2	3	18
Watch Manager	14							2	41
Crew Manager	7						1	4	32
Firefighter	25				1	1	1	10	148
Total	60	0	0	0	1	1	5	19	240



Retained firefighters by gender, age, disability, ethnicity, religion and sexual orientation

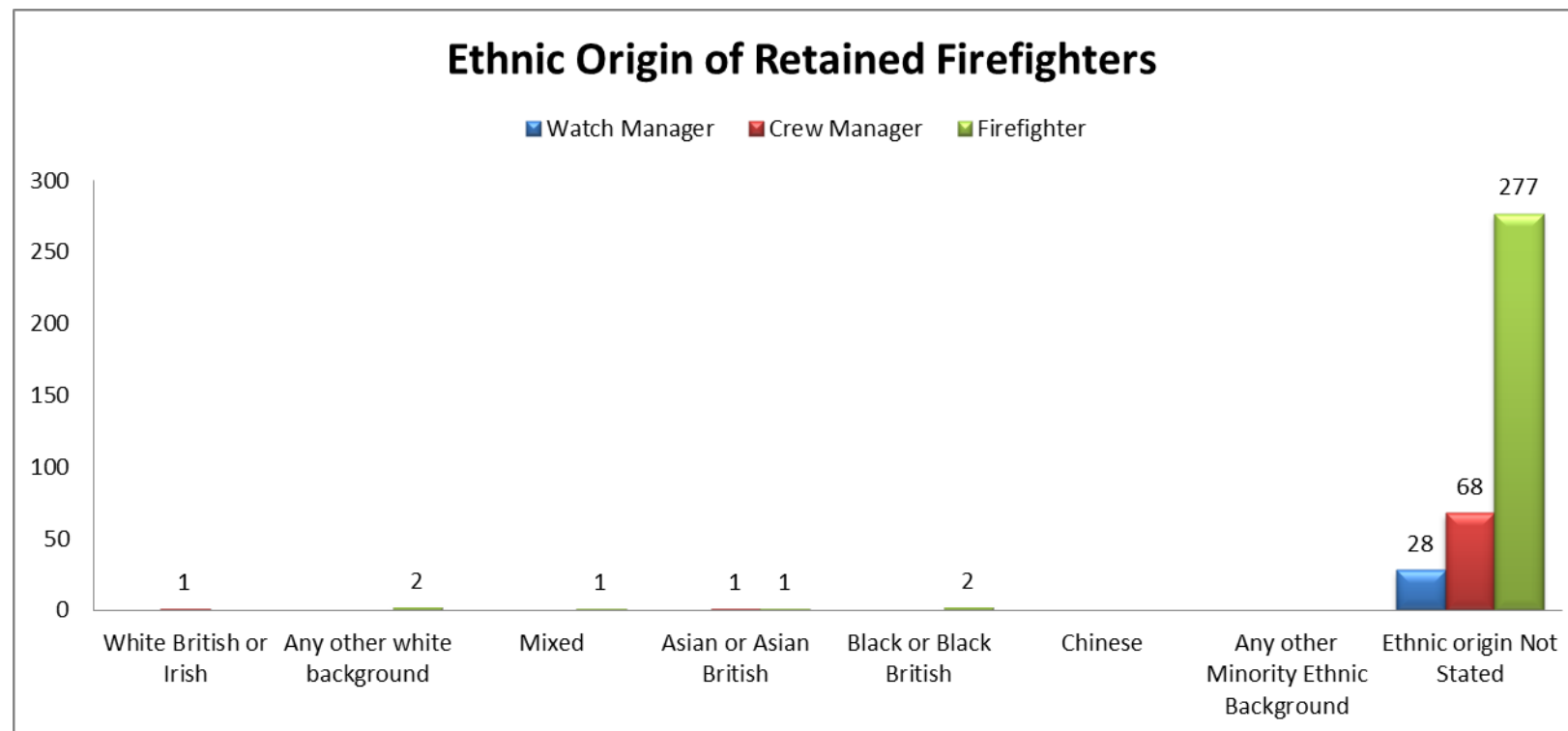
Gender of Retained firefighters at 31 March:

Position	Men	Women
Executive		
Director		
Group Manager		
Station Manager		
Watch Manager	27	1
Crew Manager	66	4
Firefighter	264	19
Total	357	24



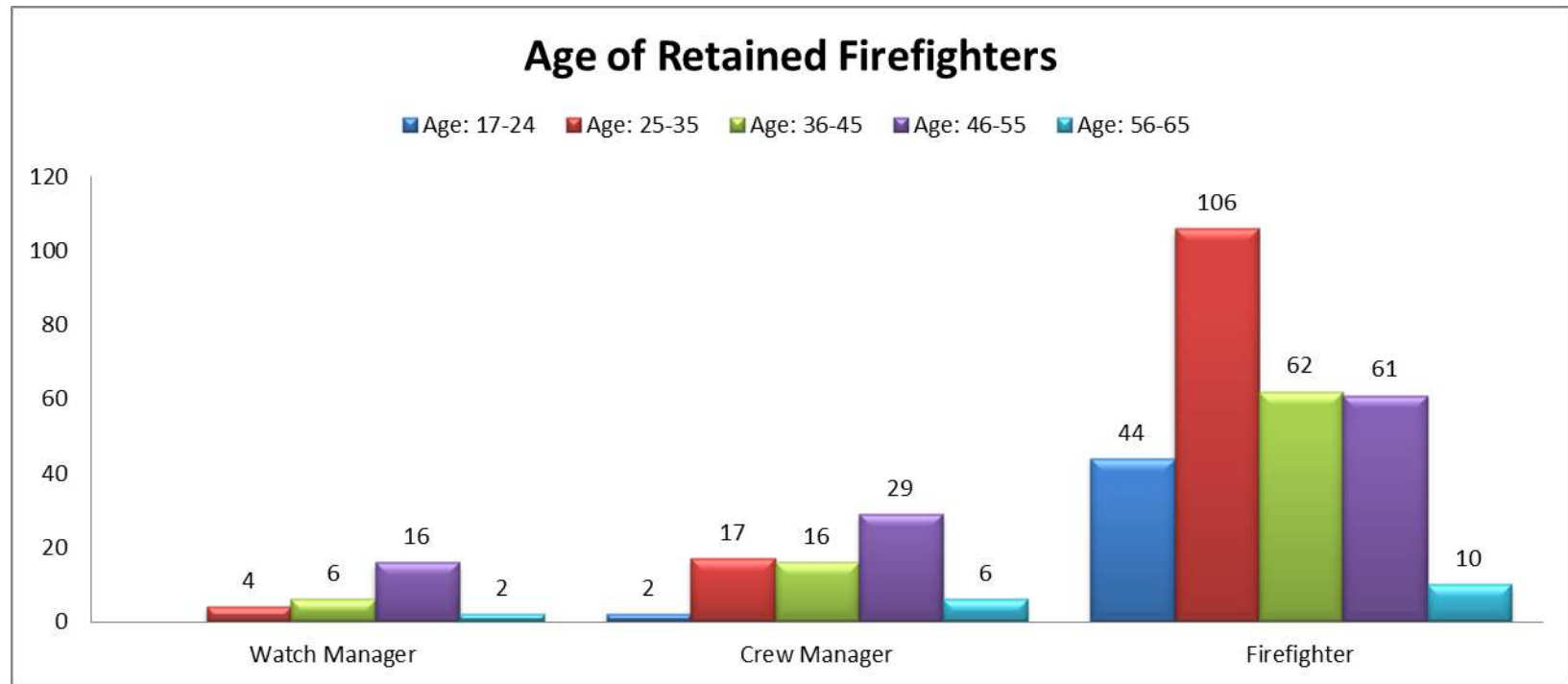
Ethnic Origin of Retained Firefighters at 31 March:

Position	White British or Irish	Any other white background	Mixed	Asian or Asian British	Black or Black British	Chinese	Any other Minority Ethnic Background	Ethnic origin Not Stated
Executive								
Director								
Group Manager								
Station Manager								
Watch Manager								28
Crew Manager	1			1				68
Firefighter		2	1	1	2			277
Total	1	2	1	2	2			373



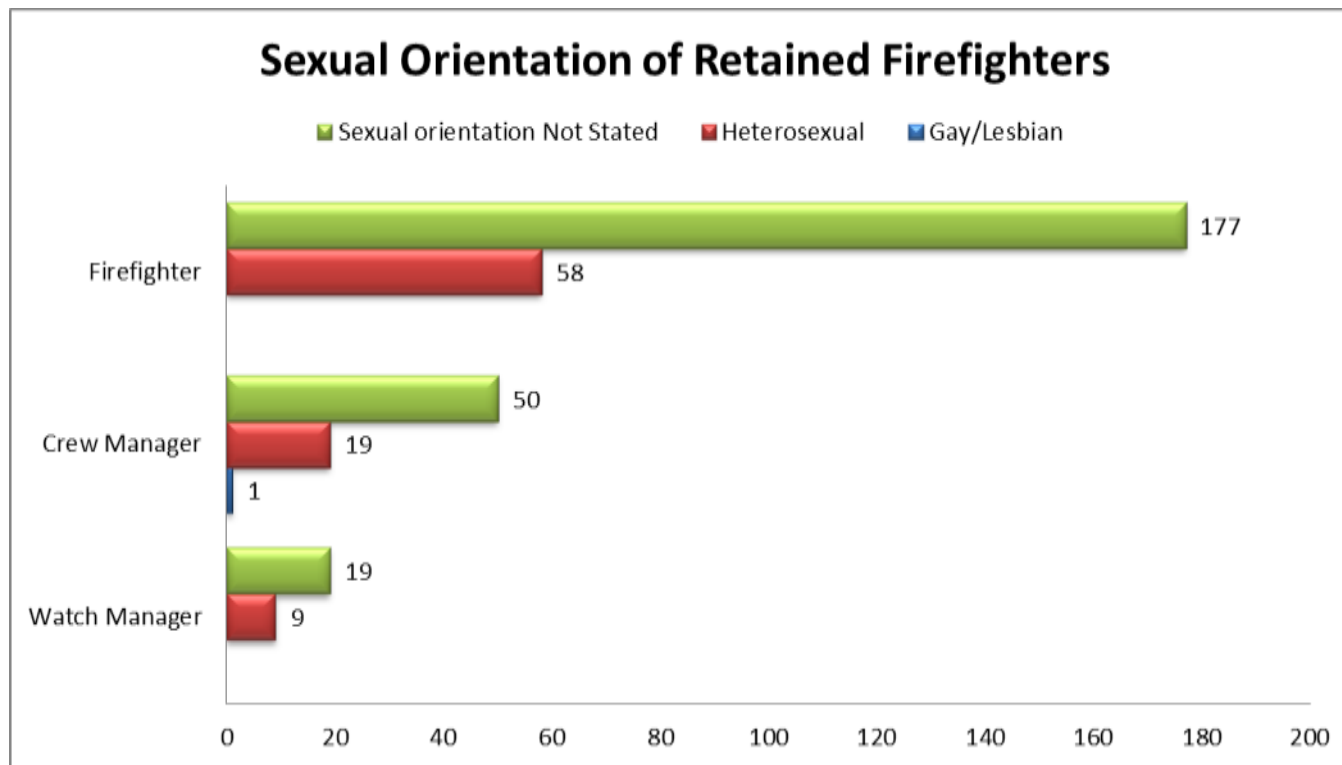
Age of Retained Firefighters at 31 March:

Position	Age: 17-24	Age: 25-35	Age: 36-45	Age: 46-55	Age: 56-65	Age: 66+	Age Not Stated
Executive							
Director							
Group Manager							
Station Manager							
Watch Manager		4	6	16	2		
Crew Manager	2	17	16	29	6		
Firefighter	44	106	62	61	10		
Total	46	127	84	106	18	0	0



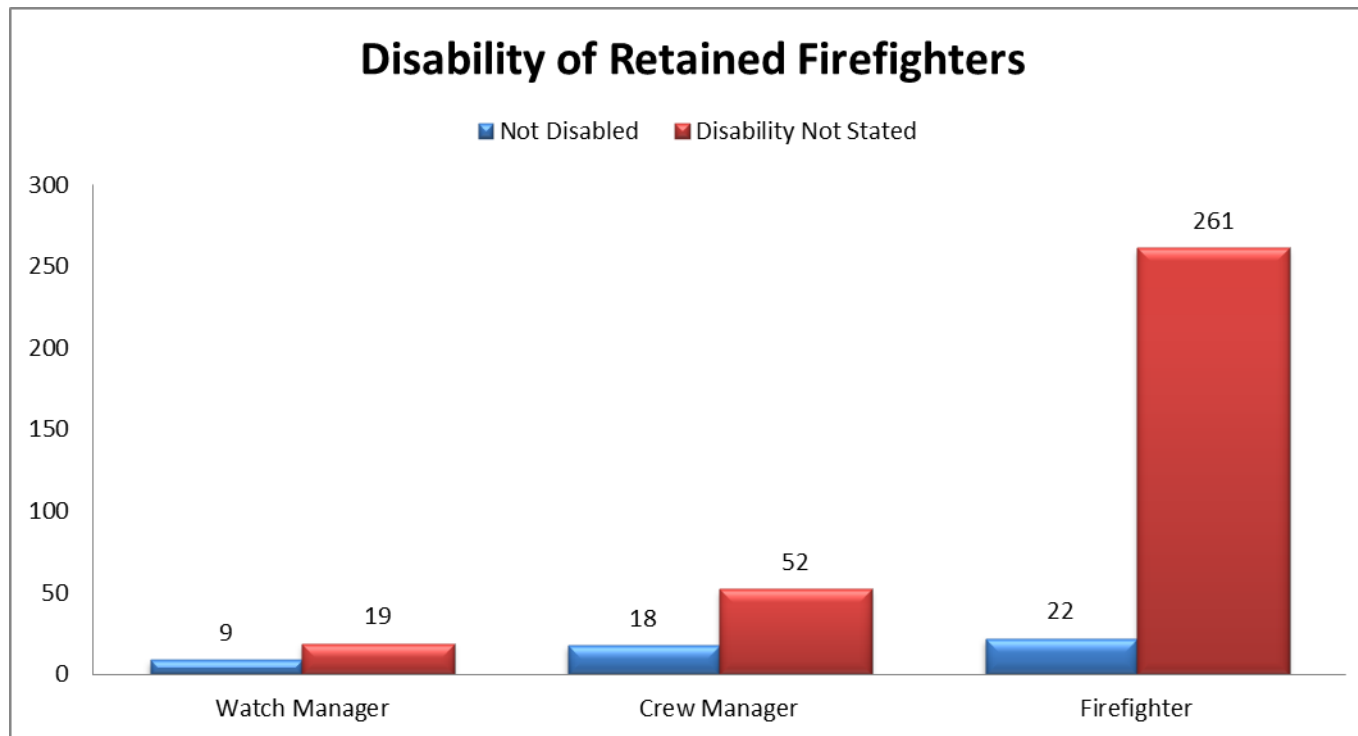
Sexual orientation of Retained firefighters at 31 March:

Position	Bisexual	Gay/Lesbian	Heterosexual	Sexual orientation Not Stated
Executive				
Director				
Group Manager				
Station Manager				
Watch Manager			9	19
Crew Manager		1	19	50
Firefighter			58	177
Total	0	1	86	246



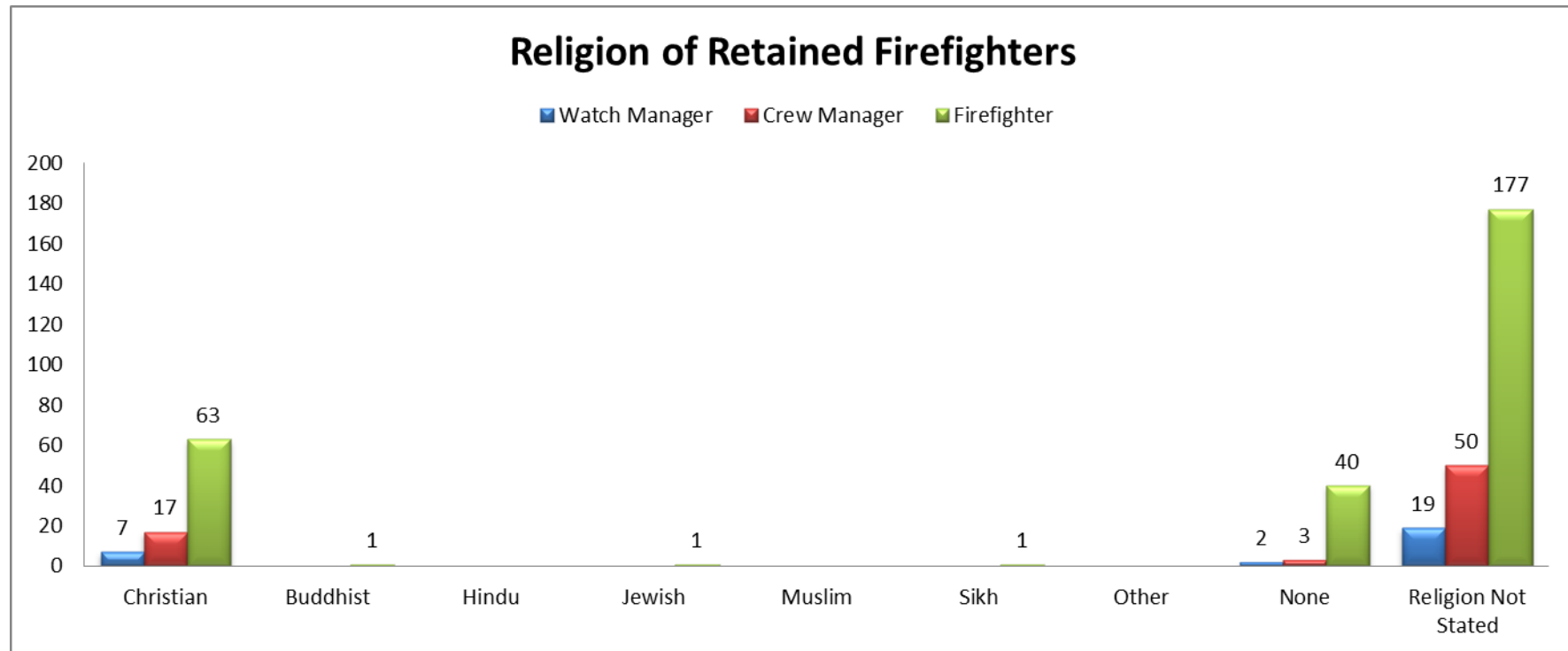
Disability of Retained firefighters at 31 March:

Position	Disabled	Not Disabled	Disability Not Stated
Executive			
Director			
Group Manager			
Station Manager			
Watch Manager		9	19
Crew Manager		18	52
Firefighter		22	261
Total		49	332



Religion of Retained firefighters at 31 March:

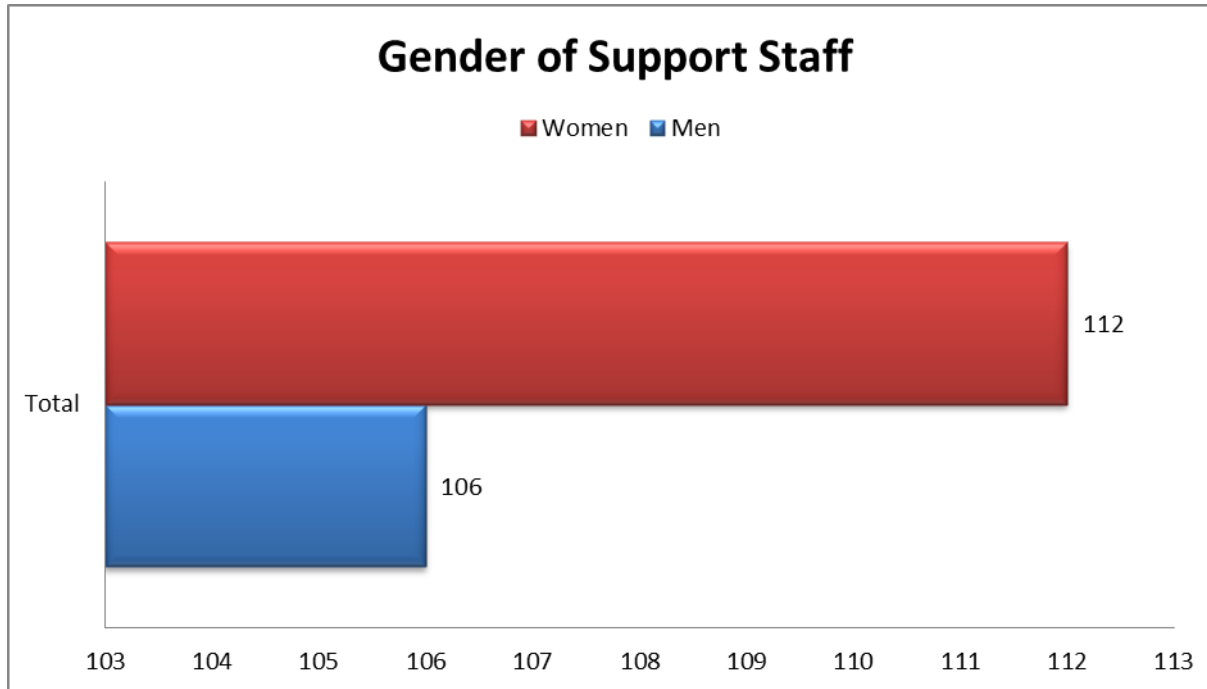
Position	Christian	Buddhist	Hindu	Jewish	Muslim	Sikh	Other	None	Religion Not Stated
Executive									
Director									
Group Manager									
Station Manager									
Watch Manager	7							2	19
Crew Manager	17							3	50
Firefighter	63	1		1		1		40	177
Total	87	1	0	1	0	1	0	45	246



Support Staff by gender, age, disability, ethnicity, religion and sexual orientation

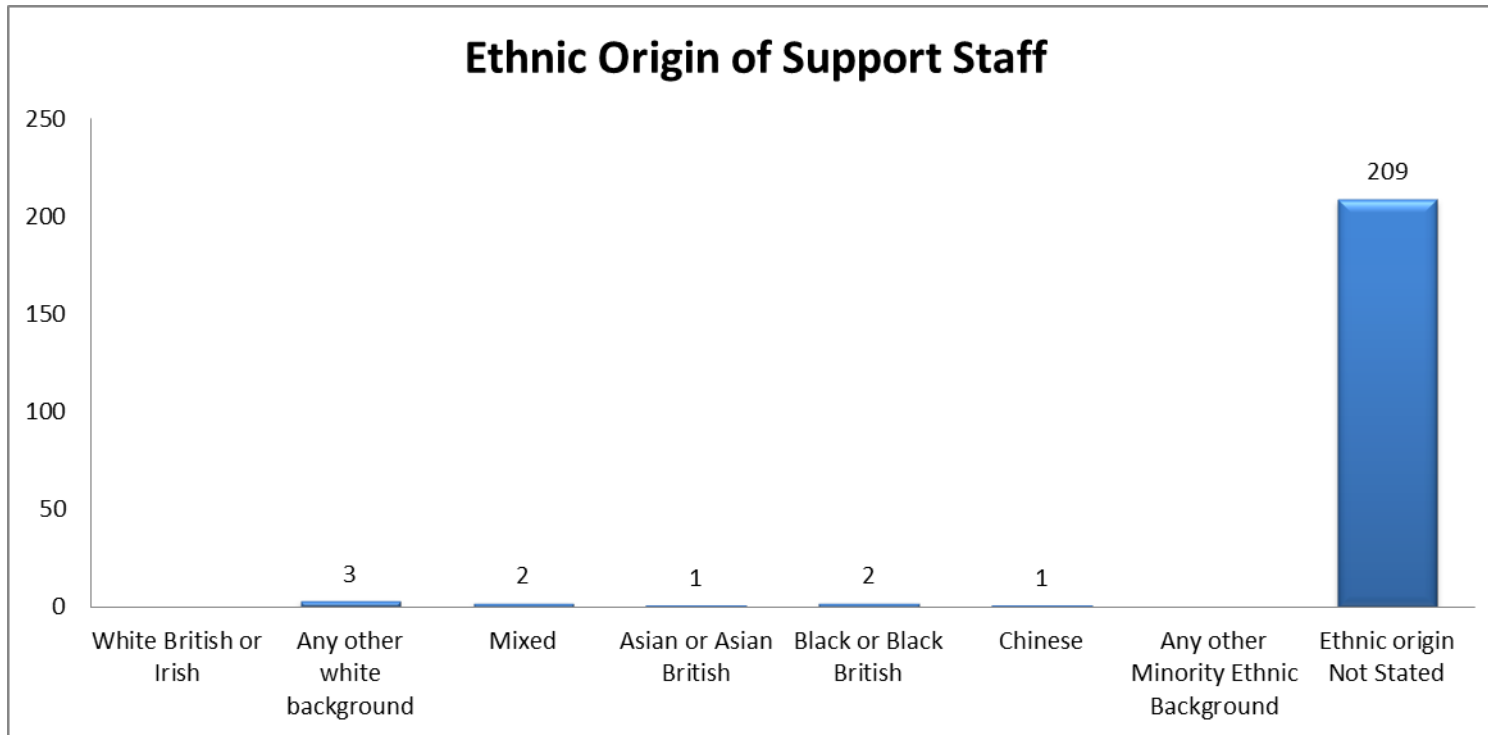
Gender of Support Staff at 31 March:

Position	Men	Women
Total	106	112



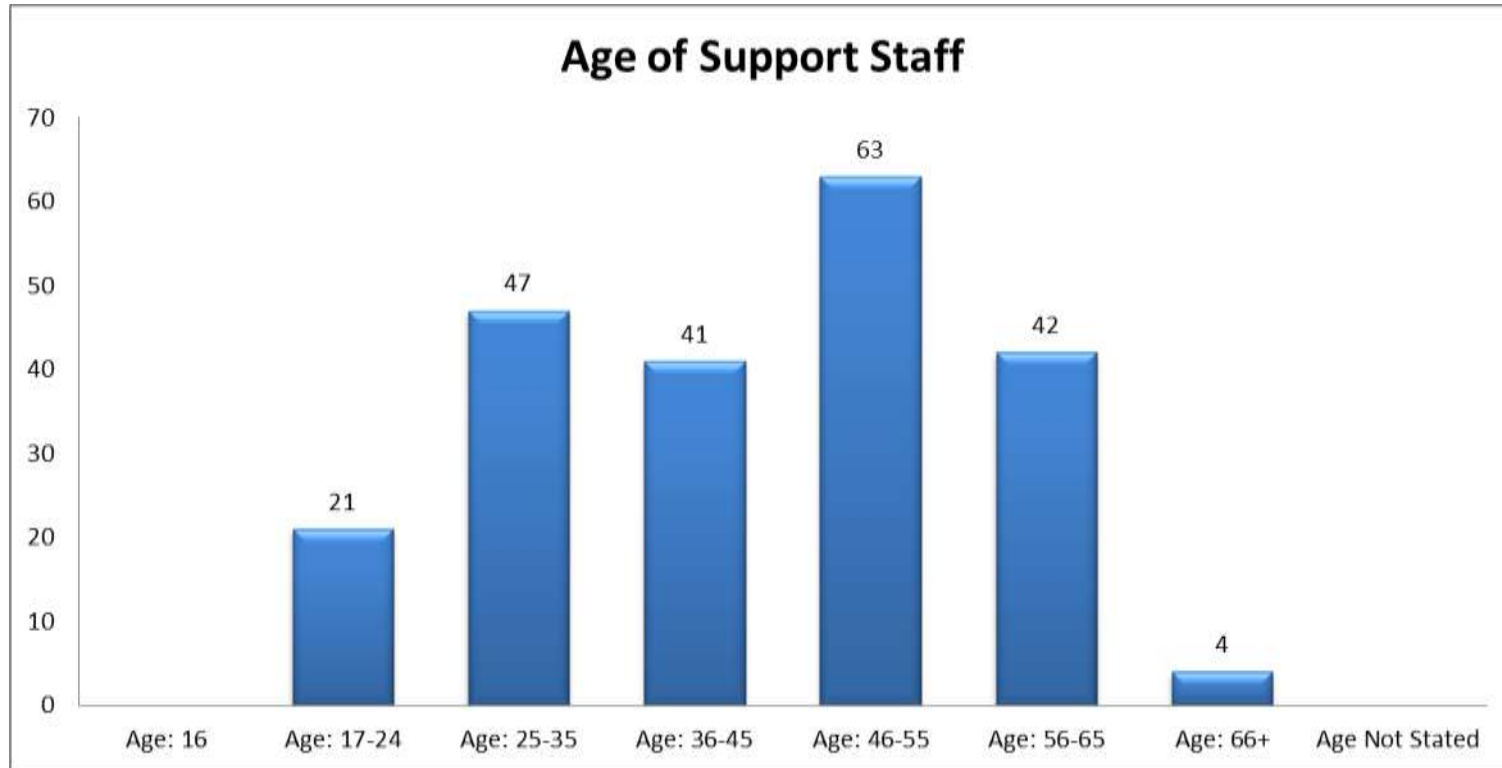
Ethnic Origin of Support Staff at 31 March:

Position	White British or Irish	Any other white background	Mixed	Asian or Asian British	Black or Black British	Chinese	Any other Minority Ethnic Background	Ethnic origin Not Stated
Total		3	2	1	2	1		209



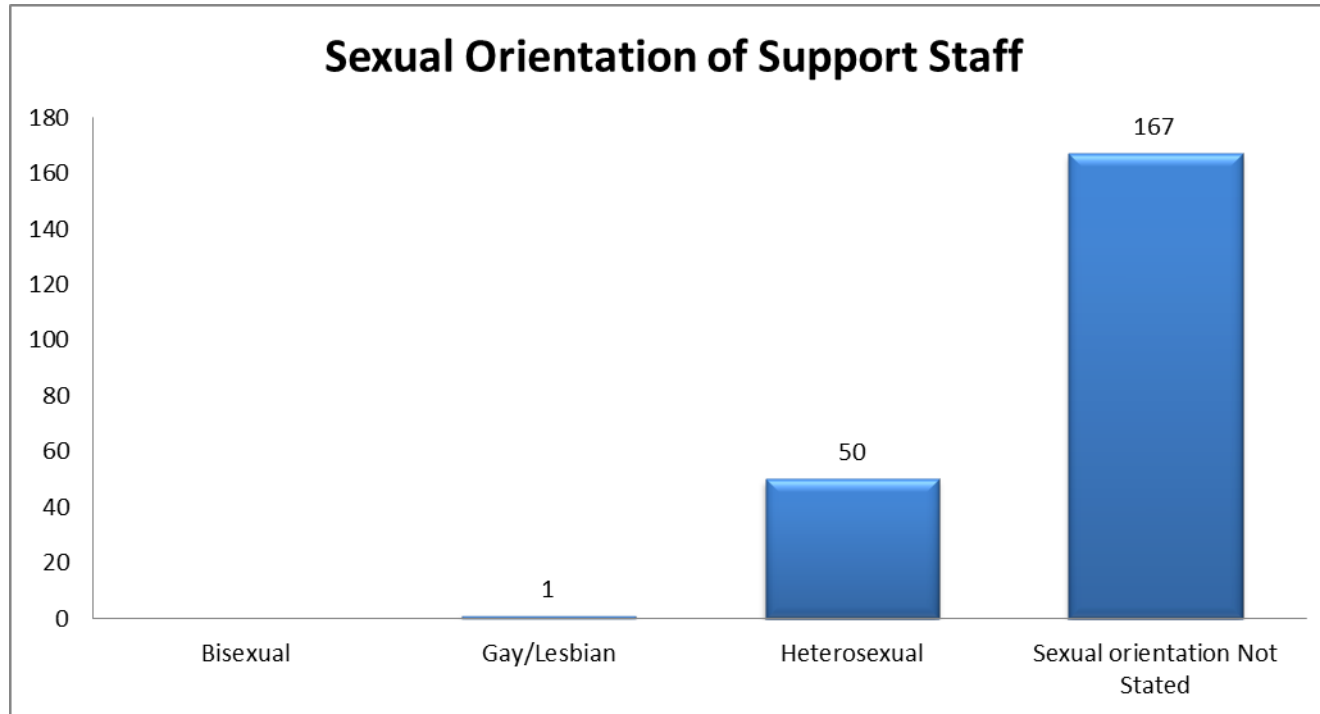
Age of Support Staff at 31 March:

Position	Age: 16	Age: 17-24	Age: 25-35	Age: 36-45	Age: 46-55	Age: 56-65	Age: 66+	Age Not Stated
Total		21	47	41	63	42	4	



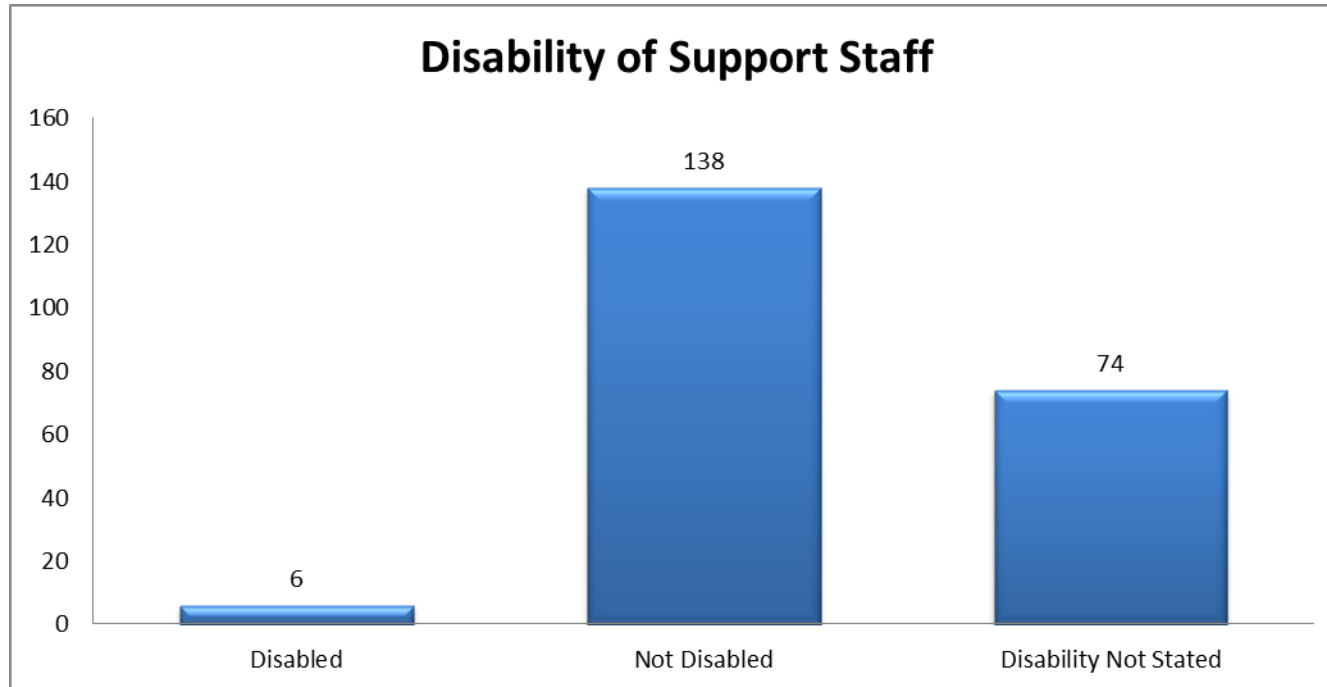
Sexual orientation of Support Staff at 31 March:

Position	Bisexual	Gay/Lesbian	Heterosexual	Sexual orientation Not Stated
Total		1	50	167



Disability of Support Staff at 31 March:

Position	Disabled	Not Disabled	Disability Not Stated
Total	6	138	74



Religion of Support Staff at 31 March:

Position	Christian	Buddhist	Hindu	Jewish	Muslim	Sikh	Other	None	Religion Not Stated
Total	53			1	1			22	141

